

GET OUT AND HIT THE TRAILS.

The multi-use trail systems of the West Central Mountains are part and parcel of our culture, our well-being, and our daily lives. Any day of the week you can find residents and visitors alike running, hiking, biking, XC skiing, stand-up paddle boarding, or bird watching along any number of pathways systems.

The Valley County Pathways group has a master plan, including more than 100 miles of pedestrian pathways throughout the region. Volunteers and local stakeholders are continuing the work of securing and revitalizing an old railroad right-of-way to connect the communities of the West Central Mountains.

FOR MORE INFO:

mccallchamber.org | cascadechamber.com
donnellychamber.com | wcmedc.org



WEST CENTRAL MOUNTAINS
IDAHO'S ADVENTURE CORRIDOR

WEST CENTRAL MOUNTAINS
ECONOMIC DEVELOPMENT
COUNCIL

Box 2365
McCall, Idaho 83638

p: 208-398-3321
wcmedc.org



TRAIL MAP

IDAHO'S
**WEST CENTRAL
MOUNTAINS**



WEST CENTRAL MOUNTAINS
IDAHO'S ADVENTURE CORRIDOR

Valley County • Cascade • Donnelly • McCall • Meadows Valley

YOUR PATH TO FUN AND ADVENTURE.

The West Central Mountains are home to one of the most impressive trail systems in North America. Hundreds of miles of single track, two track, Jeep roads, water trails, and paved pathways give you thousands of potential recreational options—no matter your skill level or penchant for adventure. Whether you're looking for a family-friendly jaunt in the woods along creeks, rivers, and lakes, or gearing up for a multi-day back country mountain bike ride; all are possible in the West Central Mountains: Idaho's Adventure Corridor.

For more information;
www.valleycountypathways.org

MAJOR TRAILHEADS/ROUTES:

McCall: Bear Basin, Crestline, Ponderosa, North Valley, Fall Creek Saddle, Box Lake, Snowslide Lake.

Donnelly: Tamarack, Davis Creek, Norwood.

Meadows Valley: Rubicon, Last Chance.

Lake Fork: Jug Mountain Ranch, Boulder Lake.

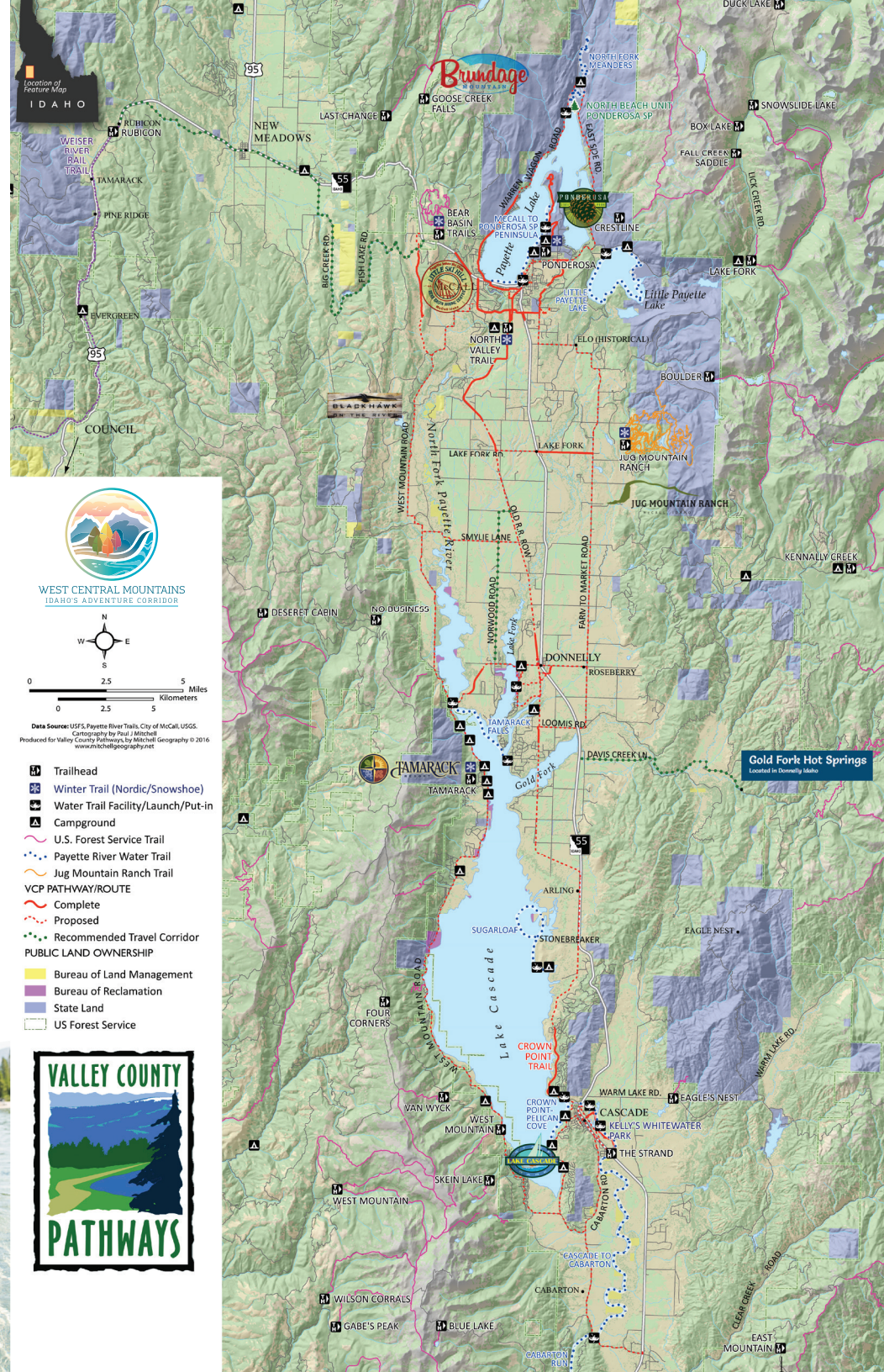
Cascade: Four Corners, Van Wyck, West Mountain, The Strand, Skein Lake, Eagle's Nest, Blue Lake, East Mountain.

©Photographs from Visit Idaho.

WATER TRAILS, CANOE/KAYAK:

Explore nearly 100 miles of water trails.

Use this QR code to access the **Payette River Basin Water Trails map**.



Use this QR code to access the **Valley County Pathways storymap**.



WEST CENTRAL MOUNTAINS
IDAHO'S ADVENTURE CORRIDOR

0 2.5 5 Miles
0 2.5 5 Kilometers

Data Source: USFS, Payette River Trails, City of McCall, USGS.
Cartography by Paul J. Mitchell
Produced for Valley County Pathways by Mitchell Geography © 2016
www.mitchellgeography.net

- Trailhead
- Winter Trail (Nordic/Snowshoe)
- Water Trail Facility/Launch/Put-in
- Campground
- U.S. Forest Service Trail
- Payette River Water Trail
- Jug Mountain Ranch Trail
- VCP PATHWAY/ROUTE
- Complete
- Proposed
- Recommended Travel Corridor

PUBLIC LAND OWNERSHIP

- Bureau of Land Management
- Bureau of Reclamation
- State Land
- US Forest Service

